

Subject:

FW: 2020 Census - May 1 Newsletter

2020 Census Get Out the Count Long Island



UPDATES & RESOURCES

May 1, 2019

In This Issue

[Quick Links](#)

[News](#)

[Committee Updates](#)

[Information & Resources](#)

[Important Dates](#)

[Events & Trainings](#)

Quick Links

[+ Health & Welfare Council](#)

[+ Suffolk County 2020 Census Web Page](#)

[+ Nassau County 2020 Census Web Page](#)

[+ United States Census Bureau](#)

Census in the News

Supreme Court's conservatives appear likely to let Trump add

A Message from Rebecca Sanin, President & CEO of HWCLI

The enthusiasm and energy that we have seen take hold since kicking off the Complete Count Committees in Nassau and Suffolk Counties has been nothing short of inspiring. We are so excited about the cross-sector collaboration that the two Long Island Complete Count Committees have fostered, and the wealth of ideas that these groups have generated together. Thank you for your commitment to a Complete Count in 2020 - the future success of our region depends on our Committees getting out the count!

To spread the word about the Census and start engaging Long Island's families, HWCLI launched an island-wide Logo Contest for high school students. We are looking for a logo that can brand all of our Census materials for the year ahead and raise awareness and enthusiasm. [Please take this opportunity to share our application with your networks](#) before the May 15th deadline - don't miss out on this chance for our students' talents to shine!

The Health and Welfare Council of Long Island, together with Nassau County Executive Laura Curran, Suffolk County Executive Steve Bellone, and the Long Island Community

citizenship question to 2020 Census.

The Supreme Court hearings of the citizenship question have begun.

[Read more](#)

The 2020 Census could be the next target for online fakery.

Experts expect a surge of disinformation around the upcoming Census count.

[Read more](#)

Taking Accurate Count Of Muslims For 2020 Census Will Be Extra Difficult. Here's Why.

A climate of distrust in the government could fuel an undercount in 2020.

[Read more](#)

Foundation, has launched the **Nassau and Suffolk County Complete Count Committees** as we work with community leaders to ensure that our region is fully and accurately counted in the 2020 Census.

The campaign for a Complete Count is motivated by the simple truth that every single one of us counts. **We only get one chance every ten years to ensure the Long Island receives its fair share of funding, resources, and representation for the decade to come** - the stakes truly couldn't be higher. The 2020 Census is a crucial opportunity to come together as a region and secure a fair future for Long Island. Thank you for your commitment to this essential campaign!

COMPLETE COUNT COMMITTEE UPDATES

April 12th Public Hearing Recap

On April 12th, the New York State Complete Count Commission held a public hearing at the Suffolk County Legislature to hear testimony regarding the State allocation of up to \$20 million for Census work. Vanessa Baird Streeter (Suffolk County, Assistant Deputy County Executive), Sol Marie Jones (LICF), Rebecca Sanin, Andrew Mulvey (Nassau County Office of the Comptroller, Chief of Staff), and Jeff Behler (US Census Bureau, NY Regional Office Director) presented to the commission. More than twenty of our coalition partners provided passionate testimony on the importance of our Complete Count efforts on Long Island.

We thank all those who provided comments or submitted testimony as well as everyone who has been so vitally important to building the momentum of Long Island's Complete Count Committee work. While funding remains limited and tenuous, we will continue to advocate for resources for our region and our partners. We are inspired and encouraged by the enthusiasm and commitment to achieving a Complete Count in 2020!

[Video of the public hearing can be viewed here.](#)

Our Long Island Complete Count Committees are hard at work creating a messaging strategy and outreach plan that will guide the Complete Count efforts across our region through 2020.

We have a total of twelve subcommittees including:

Subcommittee	Co-Chairs
BUSINESS	Mitch Pally, LIBI Matthew Cohen, LIA
COMMUNICATIONS	Marykate Guilfoyle, Suffolk County Communications Tory Kaso, Nassau County Government Affairs Marvin McMoore, Jr., Nassau County Office of the Comptroller
EARLY CHILDHOOD	Jan Barbieri, Childcare Council of Nassau Jen Rojas, Childcare Council of Suffolk
EDUCATION	Lars Clemensen, Hampton Bays School District Mike Nagler, Mineola School District
FAITH BASED <i>Nassau</i>	Pastor Sedgwick Easley, Union Baptist Church Rabbi Jay Rosenbaum, North American Association of Rabbis
FAITH BASED <i>Suffolk</i>	Pastor Angel Falcon, Faith Alive Ministries Reverend Roderick Pearson, Suffolk County Youth Bureau
IMMIGRANT <i>Nassau</i>	Gaby Castillo, Nassau County CASA Javier Guzman, Make the Road Farrah Mozewalla, Nassau County AAAB Mimi Pierre Johnson, Elmont Cultural Center Glykeria Tsiokanou, Make the Road
IMMIGRANT <i>Suffolk</i>	Eliana Fernandez, Make the Road Olga El Sehamy, Suffolk County Youth Bureau
LOCAL GOVERNMENT <i>Nassau</i>	Comptroller Jack Schnirman, Nassau County Councilwoman Viviana Russell, Town of North Hempstead
LOCAL GOVERNMENT <i>Suffolk</i>	Vanessa Baird Streeter, Suffolk County Assistant Deputy County Executive Ed Moltzen, Suffolk County Shared Services
PEOPLE OF COLOR	Marianela Casas, Nassau County Police Department

	Tracey Edwards, Long Island NAACP & Habitat for Humanity Suffolk
SENIOR CITIZENS	Caroline Ashby, Nassau Library System Holly Rhodes-Teague, Suffolk County Office for the Aging

You can join the subcommittees [by completing this sign up form.](#)

If you would like to recommend an individual or organization for a subcommittee, have any questions, or if you are not sure which subcommittees you are signed up for, please contact Mary Hallowell at HWCLI: mhallowell@hwcli.com or 516-505-4427.

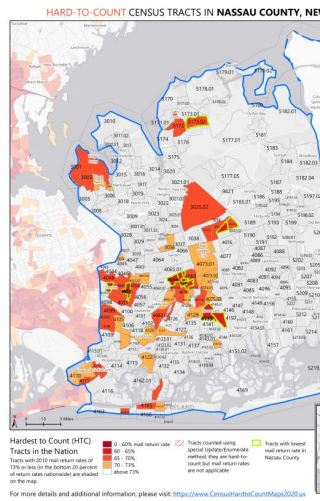
INFORMATION AND RESOURCES

Understanding the 2020 Challenge: Long Island's Hard to Count Communities

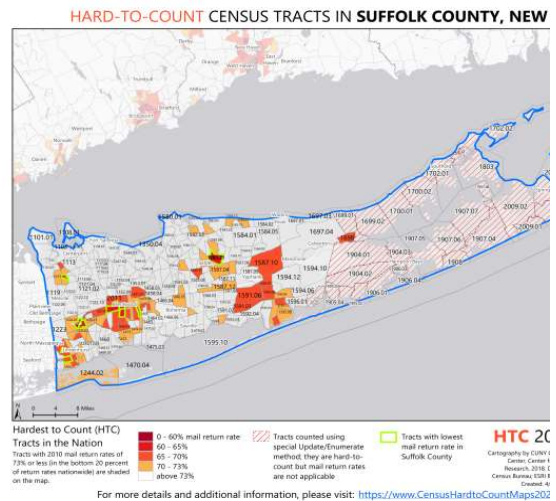
The data collected in the 2010 Census provides us with a valuable jumping-off point for a Complete Count in 2020. By understanding the regions that were Hard to Count (HTC) in 2010, we can create stronger outreach strategies for the year ahead.

Below are links to HTC maps for both Nassau and Suffolk County. The maps provide valuable insight into which areas were the hardest to reach in 2010, which areas lack internet access, and can also be broken down by legislative district.

It is important to note, however, that Long Island has seen significant demographic shifts since 2010 - so while these maps can inform a more targeted strategy, they should not be followed as if they reflect current HTC areas exactly.



[Nassau County HTC Map](#)



[Suffolk County HTC Map](#)

The Citizenship Question

The Supreme Court has begun hearings regarding the inclusion of the Citizenship Question on the 2020 Census, which would be the first time the question has been asked since 1950. Critics warn that the inclusion of this question will lead to a severe undercount, as undocumented immigrants and their families abstain from responding.

Following the first day of hearings, it appears as though the question will likely be included on the 2020 Census:

- [On Census Citizenship Question, Supreme Court's Conservatives Appear United](#), New York Times.
- [Supreme Court's conservatives appear likely to let Trump add citizenship question to 2020 Census](#), Washington Post.

NALEO (National Association of Latino Elected and Appointed Officials) held a webinar to review the SCOTUS Hearing and what it means for the Latino community, [which you can view here](#).

The final decision on this case is expected at some point in May or June of this year. Should the Supreme Court decide that the Citizenship Question will be included on the 2020 Census, the Long Island Complete Count Committees will need to robustly address the outcome across all of our work.

Additional Resources

The Leadership Conference on Civil & Human Rights has a wide array of resources for Census work, including [a series of fact sheets](#).

The George Washington University published a report on the allocation of federal funding per Census data, including [the 16 programs most affected](#).

The US Census Bureau has published a [Complete Count Committee Guide](#) to inform the work of local, grassroots efforts such as ours.

Census Bureau Partnership Specialists

The US Census Bureau has now hired four Partnership Specialists for the Long Island area who are available to attend local events, answer questions, and provide printed materials about the 2020 Census. If you have an upcoming event where you would like to provide Census information and materials, or if you would like to invite a Partnership Specialist to attend any events to speak about the Census, please reach out at them at the following contact information:

Jennifer Albert

NY Regional Partnership Specialist

jennifer.l.albert@2020census.gov

516-974-7919

Nicole Bailey

Suffolk County Partnership Specialist

Nicole.d.bailey@2020Census.gov

929-386-8274

Steven Collins

Suffolk County Partnership Specialist

Steven.collins@2020Census.gov

973-932-3856

Monique Powell

Nassau County Partnership Specialist

monique.a.powell@2020Census.gov

603-738-4153

IMPORTANT DATES

DEADLINE APPROACHING

Logo Design Contest for Long Island's High Schoolers

Deadline: May 15, 2019

To engage Long Island's high school students and start raising awareness of the Census, HWCLI is coordinating a logo design contest among all of Long Island's high schools. The winning logo will be used to brand all of our regional Complete Count materials. Please share with your networks!

[More details and application instructions can be found at this link.](#)

DEADLINE APPROACHING RFP for Media Funding

Deadline: May 17, 2019

Spread the word! Don't let our local media outlets miss out on the chance to receive funding for Census coverage.

[More details can be found at this link.](#)

LOOKING AHEAD

As our Complete Count efforts continue to expand, keep an eye out for details to follow on the following events, trainings, and convenings:

- **Communications Subcommittee Retreat:** to create the strongest messages, outreach materials, and strategies, we will be convening the Communications Subcommittee for a full day retreat and planning session.
- **Complete Count Committee Meetings:** after all subcommittees have convened, the full Committees will meet again to review the draft plans and give feedback.
- **Citizenship Question Response:** in anticipation of the Supreme Court decision, we will be coordinating a strategic plan to ensure every Long Islander is counted.
- **Census 101 Training:** following multiple requests, we will be hosting a series of Census training sessions throughout the summer to equip our coalition with the knowledge and strategies necessary for a successful Census campaign!

Questions? Suggestions?

The Complete Count Committee is always looking to expand, and our success in 2020 will depend on the participation of our entire region. If you have any questions about the Complete Count Committee, please do not hesitate to reach out to us.

Rebecca Sanin

President & CEO
HWCLI

rsanin@hwcli.com

516-505-4423

Lori Andrade

Chief Operations
Officer

HWCLI

landrade@hwcli.com

516-505-4422

Mary Hallowell

Office Affairs & Special
Projects Manager,

HWCLI

mhallowell@hwcli.com

516-505-4427



Health & Welfare Council of Long Island, Inc., 150 Broadhollow Road,
Suite 118, Melville, NY 11747